

3. Ngenzansi kunohla lwezinye zezitshalo, ezisiza ekwakheni amakhambi kanye nezichazelo zokuthi asetshenziswa kanjani nokuthi alungiswa kanjani



Above is a picture showing some of the useful insects, predators and animals in your garden. All these creatures are our friends and help to control pests

Inhlaba (aloe)

Noma iluphi uhlobo lwenhlaba lungasetshenziswa.



- ❖ Gxoba inhlaba uyifake emanzini isikalo esingango (1:5). lokhu kusho ukuthi sebenzisa amanzi aphindwe kahlanu kunesikalo senhlaba. Sefa ngendwangu bese ufafaza ngayo. Noma
- ❖ Yomisa amacembe bese uwagaya abeyimpushana. Lokhu

kungathintithelwa embewini noma ezitshalweni.

Loluhlobo lokwelapha luqeda lokhu okulandelayo:

- ❖ Izinambuzane; izintothoviyane nezintethe, izintwala zezitshalo, imiswenya;
- ❖ Izilokazane ezitholakala ezinqolobaneni eziyinkinga emmbileni, kukolo, kanye nasemabeleni;
- ❖ Umuhlwa kanye nezintuthwane.



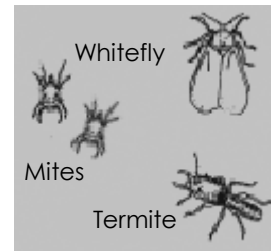
Ikhambi okuthiwa yi Wormwood noma iLengana

Sika amacembe alelikhambi uwafake emanzini isikalo esingango (1:4) bese ulinda izinsuku ezimbili kuya kweziyisikhombisa (2 – 7 days) ngaphambi kokuba uyisebenzise.



Loluhlobo lokwelapha luqeda lokhu okulandelayo:

Izinambuzane ezejwayelekile kanye neminenke



Ucadolo (blackjack)

Gcwalisa inkomishi egcwele imbewu kacadolo ngamanzi bese ubilisa imizuzu elishumi (10 minutes), noma uma uthanda ungakubilisi, uvele ukuyeke kulale ubusuku bonke. Emuva kwalokho faka ilithat elilodwa lamanzi anensipho bese ufafaza.

Loluhlobo lokwelapha luqeda lokhu okulandelayo:

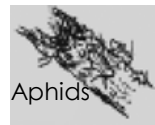
Izinambuzane: Izintwala zezitshalo, izintuthane, amabhungane, amacimbi, imiswenya, imihlwa, izinhlwabusi kanye ne “white fly”.

Upelepele (chillies)

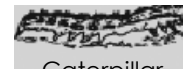
- ❖ Qoba upelepele obabayo futhi obomvu uwugcwalise enkomishini (qaphela ungazithinti emehlweni)
- ❖ Faka amalitha amabili amanzi
- ❖ Ungakuyeka lokhu kuhlale emanzini isikhathi esingangezinsuku ezimbili kuya kwezintathu noma ukubilise imizuzu engu 15.
- ❖ Faka uhhafu wenkomishi yensipho ecweciwe bese ukuhlanganisa insipho ize incibilike.
- ❖ Sefa lengxube ukuze ususe amakhafilithi kapelepele

- ❖ Fafaza lomuthi ezitshalweni zakho kanye ngesonto uma izulu libalele.

Loluhlobo lokwelapha luqeda lokhu okulandelayo:



Aphids



Caterpillar



Ants

Amacimbi, izintwala zezitshalo kanye

Ugaliga kanye noanyanisi

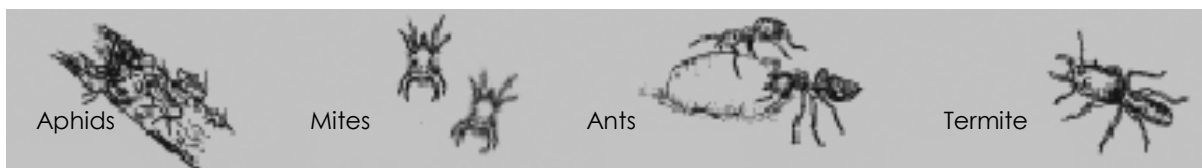
Gxoba izigaqa ezintathu ezinkulu zikagalikhi noma u anyanisi bese uxuba lokhu nezipuni ezimbili zika cooking oil noma uphalafini, ukubeke lokhu izinsuku ezimbili. Xuba lomxube namalitha amabili amanzi anensipho. Lona sekungumxube onamandla kakhulu odinga ukwehliswa amandla. I Litha elilodwa lalomxube lihlanganiswa namalitha alishumi amanzi (1:10). Usungawufafaza ke uma usuhlanganise namanzi.



Loluhlobo lokwelapha luqeda lokhu okulandelayo:

Izinambuzane: Izintwala zezitshalo, ama "mites", izibungwana zenzlabathi (wireworms), imihlwa kanye nezintuthwane.

Izifo ezifana ne "leaf spot", "blight" kanye ne "damping off". Ezinye izibonelo isifo esigqwalisa ubhontshisi okuthiwa yi "beans rust" kanye nesifo esibunisa isihlahla sika tamatisi okuthiwa yi "blight".



Amakhambi emvelo

Lamakhambi akhiwa ngezinto ezaziphila ngaphambilini kepha hhayi ngezitshalo. Ezinye zezibonelo yilezi ezilandelayo.

Umlotha wezinkuni (wood ash)

- ❖ Xuba isipuni esisodwa somlotha elitheni elilodwa lamanzi anensipho .Kuyeke ubusuku bonke. Fafaza ukulwa nezinambuzane ngokujwayelekile

- ❖ Xuba isipuni esisodwa somlotha wezinkuni elitheni lamanzi anensipho .Xuba nenkomishi eyodwa yamasi bese ufaka 3 wamalitha wamanzi. **Ukugwema:**

Greyish-white mould



Yellow spots and dead tissue



Powdery mildew:

Fine, white floury powder mostly on the upper surface

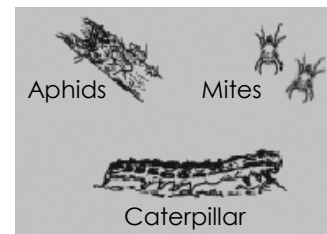
ukukhunta ezitshalweni kanye nokulwa nezinambuzane

- ❖ Thela umlotha wezinkuni kwisiyongi uzungeze lapho kuqala khona isitshalo sakho bese uthelela kancane emhlabathini .

Ukugwema: Iminenke umswenya kanye nezinye izilokazane

Ufulawa (flour)

Xuba isipuni esikhulu sikafulawa ku 1litha wamanzi .Bhulasha lokhu ecaleni elingaphansi lamacembe lapho izibungu kanye nezintwala zezitshalo zitholakala . Bhulasha ekuseni elangeni elishisayo



Ukugwema: Izicabucabu ,izibungu ,amacimbi kanye nezintwala zezitshalo .

Ubisi (milk)

Fafaza inxubevane yobisi elingango 1litha emanzini alingana no 10 litha ukugwema izibungu eziyizicabucabu kanye nezifo ezifana nokukhunta emathangeni ,ukusha kutamatisi nasemazambaneni kanye nasegciwaneni eliba kuphepha. Kwenze lokhu njalo ngemuva kwezinsuku eziyishumi.